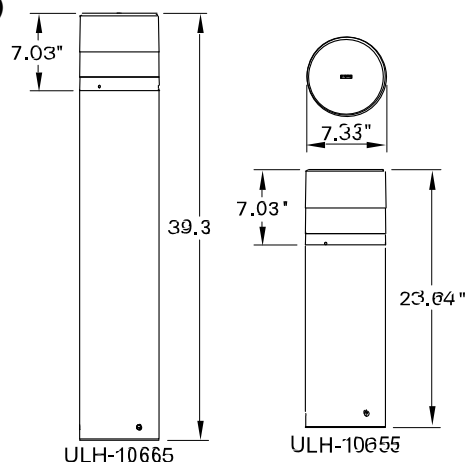


# INSTALLATION AND SERVICE MANUAL

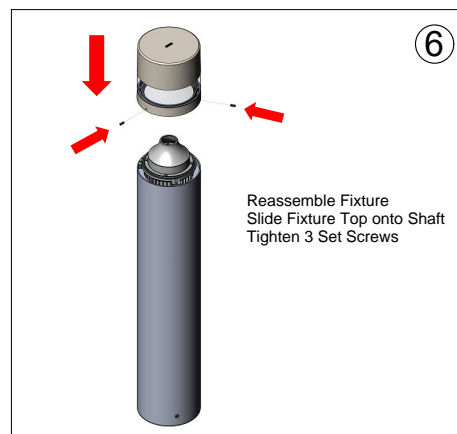
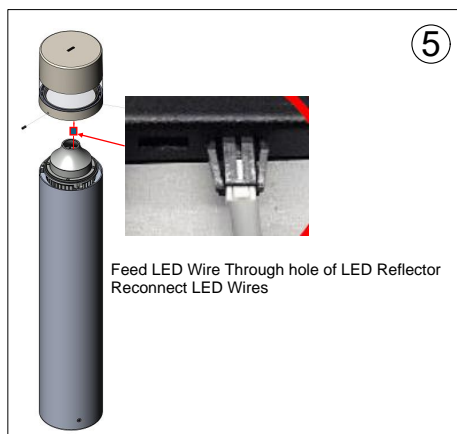
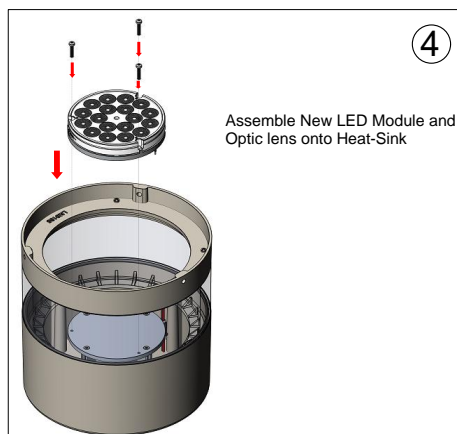
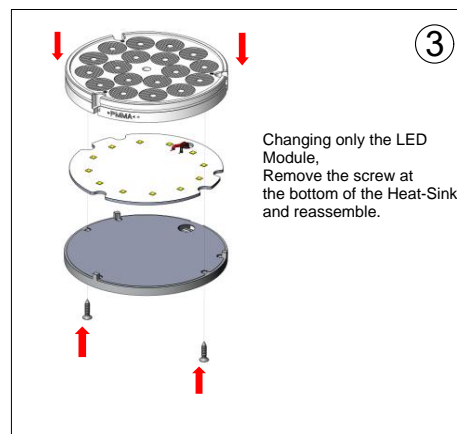
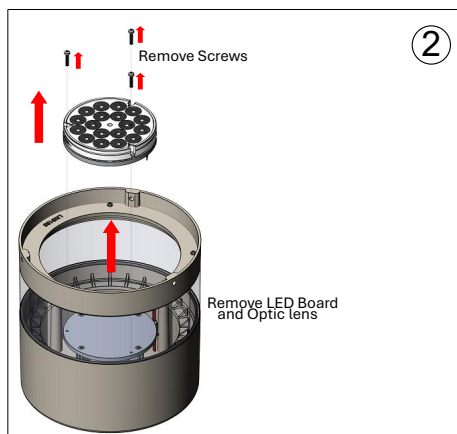
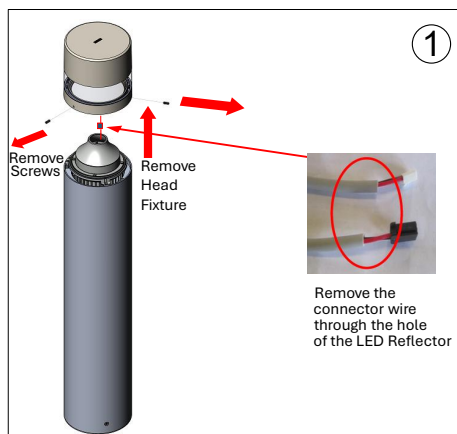
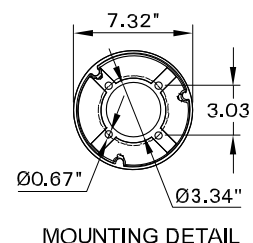
**LIGMAN**  
NORTH AMERICA

## Installation Instructions for LED Module Replacement ULH-10665

### Product drawing (dimensions)



### SUITABLE FOR WET LOCATIONS



### Notice to Installer

#### Wiring Instruction ⚠ Warning:

- Risk of Fire and Electrical Shock, This fixture must be installed only by a qualified electrician, Installation must adhere to the National Electrical Code (NEC) and all applicable local and federal regulations.
- Always disconnect power before servicing the fixture.